

# State of Wyoming Corner Record

## CORNER PERPETUATION AND FILING ACT,

Regulations of the Board of Registration for Professional Engineers and Land Surveyors.)

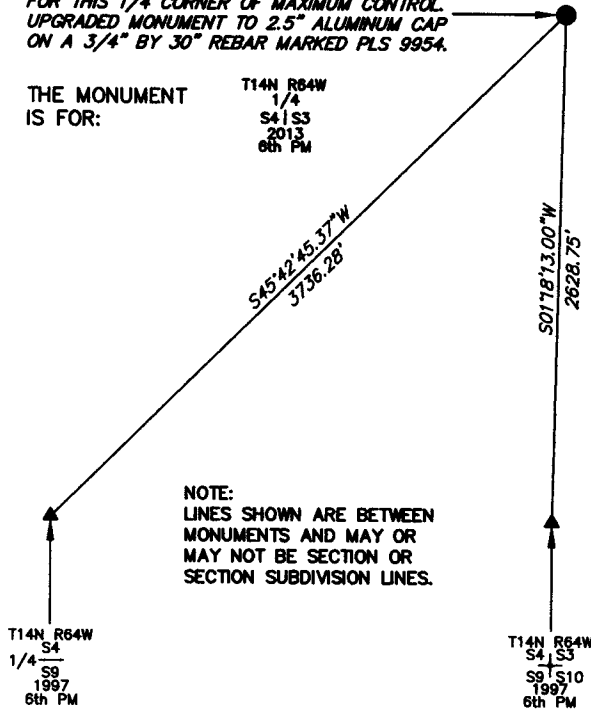
Reverse side of this form may be used if more space is needed.

Record of original survey and citation of source of historic information (if corner is lost or obliterated). Description of corner monumentation evidence found and/or monument and accessories established to perpetuate the location of this corner. Sketch of relative location of monument, accessories, and reference points with course and distance to adjacent corner(s) (if determined in this survey). Method and rationale for reestablishment of lost or obliterated corner.

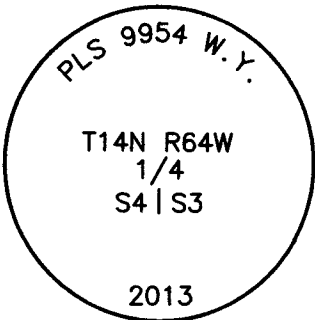
FOUND YELLOW PLASTIC CAP AT THE LOCATION FOR THIS 1/4 CORNER OF MAXIMUM CONTROL. UPGRADED MONUMENT TO 2.5" ALUMINUM CAP ON A 3/4" BY 30" REBAR MARKED PLS 9954.

THE MONUMENT IS FOR:

T14N R64W  
1/4  
S4 | S3  
2013  
6th PM



NOTE:  
LINES SHOWN ARE BETWEEN MONUMENTS AND MAY OR MAY NOT BE SECTION OR SECTION SUBDIVISION LINES.



THE MONUMENT IS MARKED

**CORNER MONUMENT SYMBOLS**

- RECORD IS FOR THIS CORNER MONUMENT.
- ▲ A RELATED CORNER OR WC MONUMENT.

↑

SCALE 1"=1000'  
(EXCEPT IN TRIVIAL CASES)  
BEARINGS ARE RELATED TO WGS 84 WITH GPS OBSERVATIONS  
DRAWN BY: SM  
P.C. D. SWANSON  
COUNTY: LARAMIE

Date of Field Work: 11/27/2013 Office Reference: \_\_\_\_\_

**CROSS INDEX DIAGRAM**

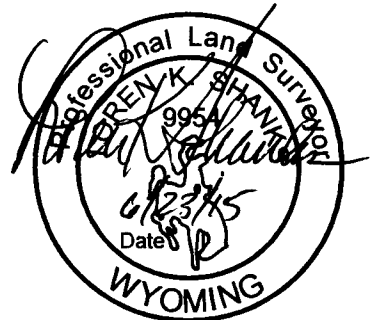
A	1	2	3	4	5	6	7	8	9	10	11	12	13	14	15	16	17	18	19	20	21	22	23	24	25
B																									
C				6		5							4												
D																									
E																									
F																									
G																									
H																									
J																									
K																									
L																									
M																									
N																									
O																									
P																									
Q																									
R																									
S																									
T																									
U																									
V																									
W																									
X																									
Y																									
Z																									
	1	2	3	4	5	6	7	8	9	10	11	12	13	14	15	16	17	18	19	20	21	22	23	24	25

Firm/Agency, Address

UELS, LLC  
85 South 200 East  
Vernal, Utah 84078  
435-789-1017

This corner record was prepared by me or under my direction and supervision.

SEAL & SIGNATURE



RECP #: 670084  
RECORDED 9/22/2015 AT 10:40 AM BK# 2465 PG# 92  
Debra K. Lathrop, CLERK OF LARAMIE COUNTY, WY PAGE 1 OF 1